

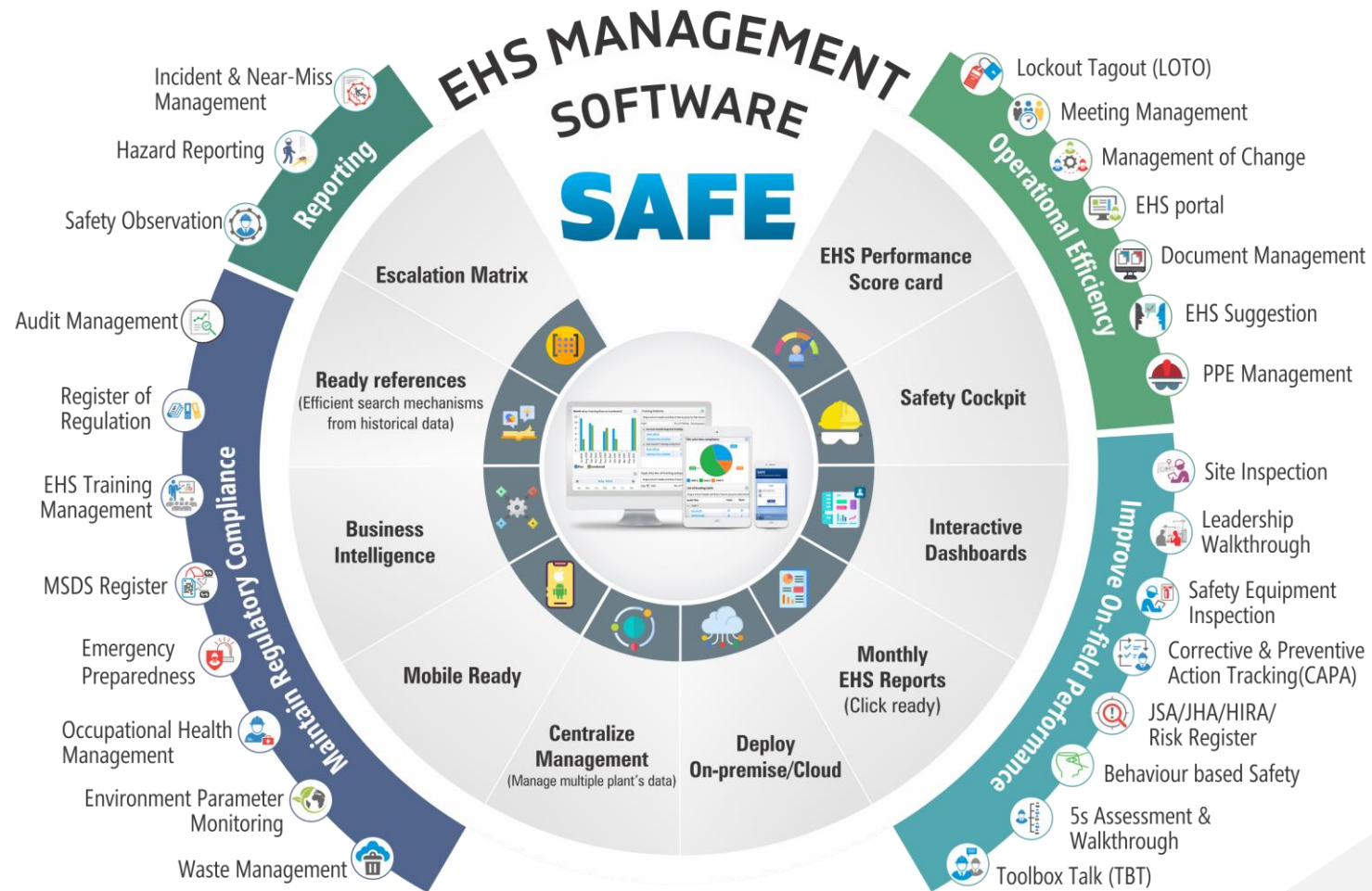


# SAFE

Customizable and configurable web-based EHS solution that expands engagement in safety activities and promotes a safe work culture

**Maximize ROI, Save Time & Accomplish High Safety Performance**

# A COMPREHENSIVE SOLUTION FOR HOLISTIC EHS MANAGEMENT THAT IS CUSTOMIZABLE WITH 100% ADAPTABILITY



Customizable and configurable web-based & mobile ready EHS solution that expands engagement in safety activities and promotes a safe work culture and assists in ISO 45001 compliance

# TAKE A COMPREHENSIVE LOOK AT SAFE



Enable easier reporting for EHS personnel



Drive on-field performance



Fulfill your compliance and regulatory needs



Attain operational efficiency and realize your health and safety needs

**SAFE includes an array of features and functionalities that will empower you (safety professionals) to make quick decisions in a collaborative environment, where various safety reports are captured, analyzed and approved in real-time - alerting rapid action teams to take preventive measures to control occupational hazards.**

# REPORTING MADE EASY



**Incident & Near-Miss  
Reporting and Management**



**Hazard Reporting**



**Safety Observations**

## Work sites

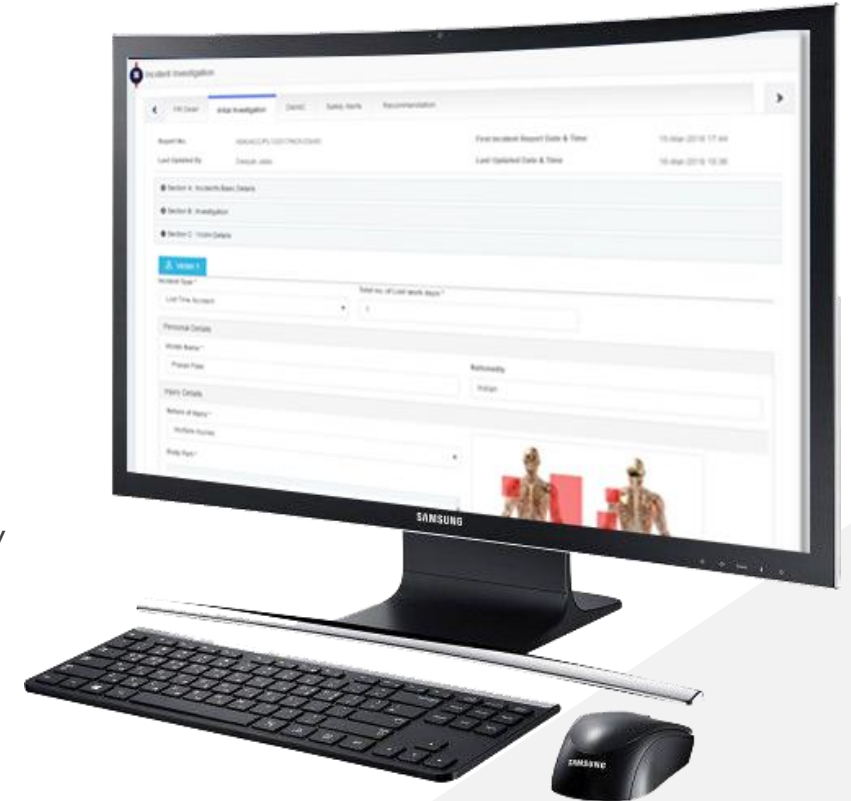
- Standardized & efficient reporting
- Thorough assessments & investigations along with RCA
- Robust CAPA assignment & tracking
- Real-time notifications & alerts
- Built-in reminder & escalation mechanism
- Site-level actionable insights to reduce incidents & eliminate risks

## ACCELERATE

Primary EHS reporting functions through a series of automated, user centric and customized processes

## Corporate team / Leadership

- At-a-glance dashboards to evaluate performance & drive decision making
- Automated alerts & escalations for very serious incidents
- Click-ready reports
- Knowledge sharing (lessons learnt)
- Consolidated CAPA tracker



# DRIVE PERFORMANCE (On-field)



Site & Safety Equipment Inspection



Leadership Walkthrough



5S Assessment & Walkthrough



Behaviour-Based Safety



Risk Assessments



Tool Box Talks

## Work sites

- Planner & Scheduler
- Automated alerts & reminders for upcoming events
- Carry out activities as per the schedule or when needed (support for configurable checklists)
- Robust CAPA assignment & tracking
- Verify CAPA completion & effectiveness
- Communicate better - Take photos and attach documents
- e-Signatures capturing
- Built-in reminder & escalation mechanism
- Easy reference to historical data and site-level analytics

## NAVIGATE

Your way to high performance through streamlined schedules, action-oriented plans and escalation matrix



# DRIVE PERFORMANCE (Corporate Offices)

 EHS Cockpit & Performance Scorecards

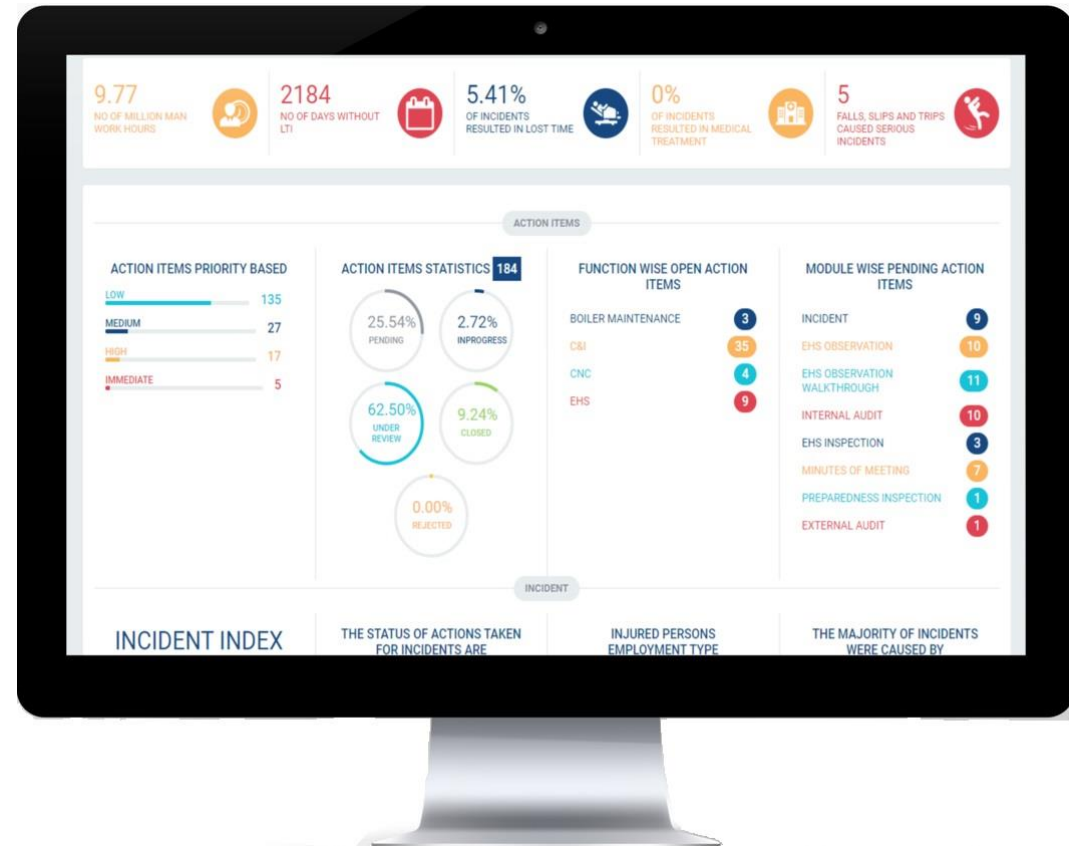
 CAPA Tracking along with Horizontal Deployment

## DISCOVER AND UNEARTH

Insights through data analysis, real-time notifications and proactive planning

### Corporate team / Leadership

- Set & Monitor targets
- Actionable insights highlighting areas of concern/improvement & planning effectiveness
- Click-ready reports
- Consolidated CAPA tracker
- Evaluate EHS Performance
- Action assignment to elevate performance
- Provision for Horizontal Deployment
- Confirm on-site presence (Geo-location, QR Code)





# FULFILL COMPLIANCE



**EHS Training Management**



**EHS Audit Management**



**Emergency Preparedness & Mock drills**



**Occupational Health Management**

## Work sites

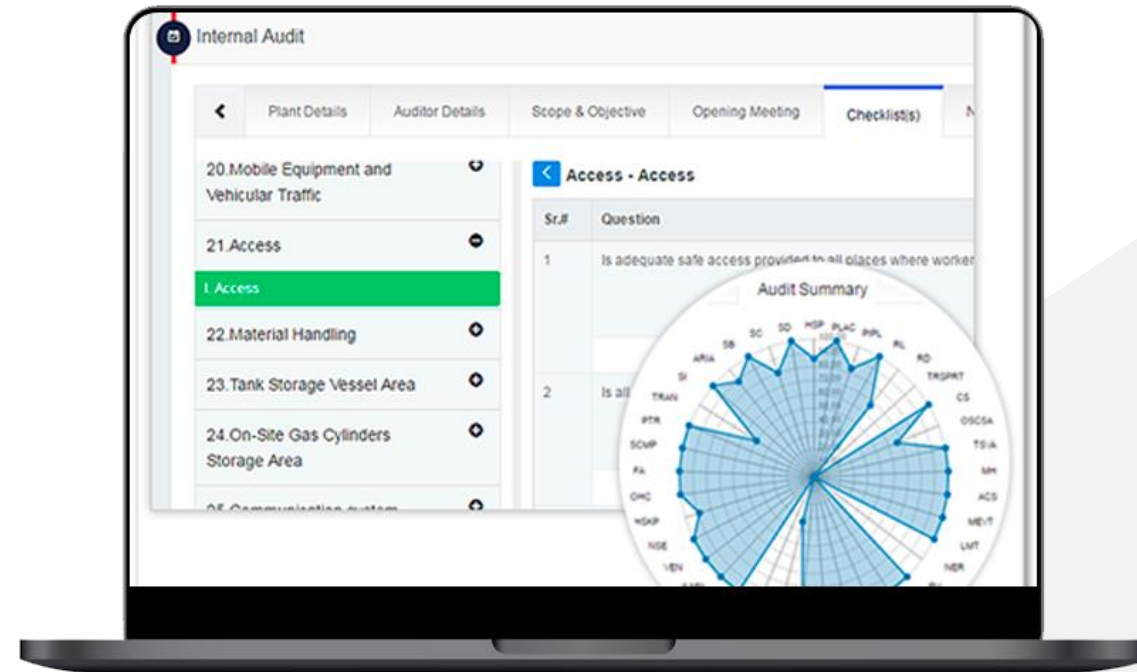
- Planner & Scheduler
- Automated alerts for upcoming events
- Carry out Trainings, Mock-drills & Audits as per the schedule or when needed (support for configurable checklists)
- Conduct medical checkups, campaigns & pre-employment checks
- Manage OPD visits & medicine inventory
- Robust mechanism to effectively take remedial actions for the NCs found

## Corporate team / Leadership

- Consolidated CAPA tracker to ensure NC remediation
- Powerful search engines along with click-ready reports
- Exclusive dashboards to determine compliance, identify hidden trends & gain foresight

## ADMINISTER

Critical and important compliance records proactively...



# FULFILL COMPLIANCE



Register of Regulations



Environment Parameter Monitoring



MSDS Register



Waste Management

## Work sites

- Enhance compliance fulfillment
- Automated alerts for renewals / mandates
- Comprehensive data collection
- Cradle-to-grave management of waste

## Corporate team / Leadership

- Escalation matrix
- Ready reference – compliance documents' management
- Benchmarked targets
- Automated alerts when environment parameters exceeds the permissible limits (based on threshold/criteria set)

# INVIGILATE

Critical and important compliance records proactively...

Logged in as System Administrator

### Regulation Current Status

Site: Ahmedabad

Subject Sr. #	Regulation	Applied On	Granted On	Valid Till	Next Application Date
1	WATER ACT, 1974 / RULES 1975				
1.1	Consent to establish for the discharge of waste wa...	01-Jun-2013	16-Sep-2013	05-Aug-2018	
1.2	Consent to operate for the discharge of waste wat...	01-Sep-2015	22-Jan-2016	14-Dec-2020	14-Sep-2020
2	WATER CESS ACT, 1977 / RULES 1978				
2.1	Water Cess Return (FORM-I)	06-Jan-2020	06-Feb-2020	05-Feb-2021	06-Jan-2021
3	AIR ACT, 1961 / RULES 1962				
3.1	Consent to establish for emissions	01-Jun-2013	16-Sep-2013	05-Aug-2018	
3.2	Consent to operate for emissions	01-Sep-2015	22-Jan-2016	14-Dec-2020	14-Sep-2020
4	ENVIRONMENTAL (PROTECTION) ACT RULES ...				
3	AIR ACT, 1961 / RULES 1962				
3.1	Consent to establish for emissions	01-Jun-2013	16-Sep-2013	05-Aug-2018	



# ATTAIN OPERATIONAL EFFICIENCY



Management of Change



Safety Meetings Management



Document Management



PPE Management

## Work sites

- No by-passing of process & critical-to-safety steps
- Clear action plans & tasks along with robust tracking
- Established escalation matrix
- Comprehensive document reference
- Document version control

## EMPOWER

Individuals and teams with a synchronized system and process to boost efficiency

## Corporate team / Leadership

- Track & trace safety critical tasks
- Ready references
- Transparency & accountability
- Click-ready reports & incisive visibility to identify bottlenecks in the process



# ATTAIN OPERATIONAL EFFICIENCY



**EHS Portal & Knowledge Desk**



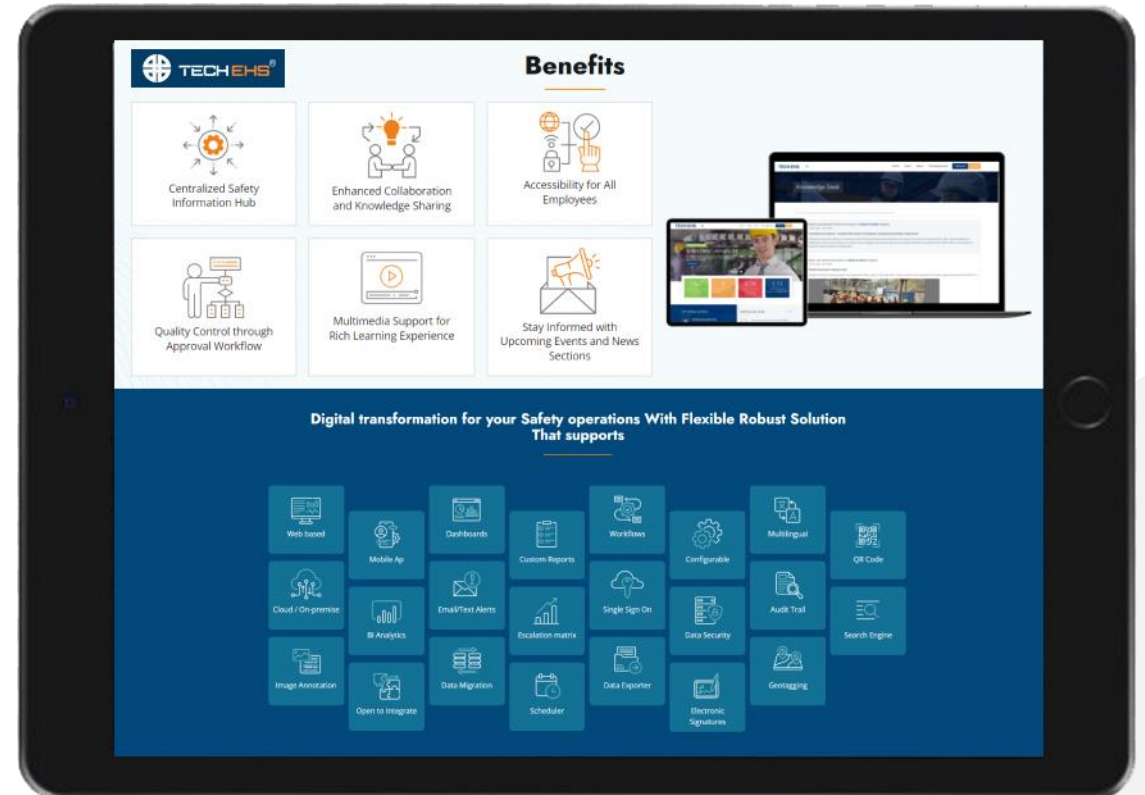
**Safety Alerts – Lessons learnt**

## ENCOURAGE & ENGAGE

Knowledge sharing and transparency through direct dialogue with stakeholders

### Work sites and Corporate team / Leadership

- Peer-to-peer knowledge sharing to spread awareness
- Multiple ways to share information – text, photographs, videos, external links
- Filter posts based on Topics & Authors
- Motivational mouth piece
- Empowering leadership to mass communicate & sensitize employees
- Newsletters / message boards
- Transparent communications
- Circulate lessons learnt from the past incidents



# YOUR DIGITAL TRANSFORMATION FOR EHS BEGINS HERE

Web Based Solution

Companion Mobile App  
(iOS & Android)

Instant Email/SMS Alerts/Push  
Notifications

User Friendly Interface

Upload External  
Documents

Photo Capture, Markup  
& Annotation Tool

QR Code Scanning & Geo-  
location tagging

Audit Trail  
(Comments & Actions log)

Electronic Signatures

Modular Design  
(Freedom to pick & select only  
what is needed)

Manage Multiple  
Plant/Site Data

Multilingual Solution

Highly Configurable &  
Tailored to Client Needs

Flexible Deployment  
On-premise or Cloud (client-  
owned)

Project Consultancy &  
Implementation Assistance

Superior Software  
Support

Scalable Infrastructure

Integration with BI tools

Active Directory / Azure AD  
Integration with Single  
Sign-On

Open for Integration  
with Other Systems

# THANK YOU

- TECH EHS builds and delivers 'service-driven' EHS software solutions to help comply with complex environmental directives and critical health and safety solutions.
- 'Safety software' has been the epicenter of our quest for excellence – our vision lies in reinforcing, upgrading and elevating industrial performances for modern workplaces.



<https://techehs.com/software/ehs-safety-software>



[info@techehs.com](mailto:info@techehs.com)



+91 898 001 0420